

CORSO DI LAUREA IN TECNICHE DI RADIOLOGIA MEDICA
PER IMMAGINI E RADIOTERAPIA

**CORSO DI: SISTEMI DI ELABORAZIONE DELLE
INFORMAZIONI I**

Anno Accademico 2017/2018

Dott. Silvio Pardi

Lezione N°8

dcm4che

Open Source Clinical Image and Object Management

<http://www.dcm4che.org/>

Service	Description
Web-based UI	dcm4chee contains a robust user interface for administrators which runs entirely in a Web browser.
DICOM Storage	Acting as an archive, dcm4chee is able to store any type of DICOM object to standard file systems, with compression if necessary.
DICOM Query/Retrieve	Query the archive for DICOM objects, and retrieve them.
<u>WADO</u> and <u>RID</u>	Web access to the archived content.
Other DICOM Services	<u>MPPS</u> , <u>GPWL</u> , <u>MWL</u> , Storage Commitment, Instance Availability Notification, Study Content Notification, Output Content to CD Media, Hanging Protocols, and more.
HL7 Server	An integrated HL7 server which can act on ADT, ORM, and ORU message types.
IHE Services	dcm4chee can happily exist in an IHE-capable environment by integrating with an <u>XDS</u> / <u>XDSI</u> registry and repository, acting as a secure node, and providing compliant auditing.

Installazione Server PACS

<http://people.na.infn.it/~spardi/PACS/>

ssh IP -l ubuntu

```
sudo apt-get install software-properties-common
```

```
sudo apt-get update
```

```
sudo apt-get install mysql-server
```

```
wget http://people.na.infn.it/~spardi/PACS/mysql-init
```

```
mysql -u root -punicampania < mysql-init
```

```
wget http://people.na.infn.it/~spardi/PACS/install.sh
```

```
chmod 755 install.sh
```

```
./install.sh
```

Avvio del servizio

```
sudo su - dcm4chee -c /opt/dcm4chee/bin/run.sh > out-log &
```

Primo accesso via browser

```
http://IP:8080/dcm4chee-web3/
```

User login at ecs-7f64

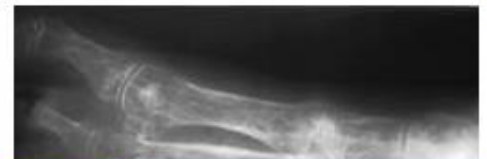
Username:

Password:

DICOM DI TEST

rx example radiology image feet

<https://imaging.nci.nih.gov/ncia/login.jsf>



Health Level Seven (HL7)

GINKGO-CADX DA QUESTO LINK

https://sourceforge.net/projects/ginkgocadx/?source=typ_redirect

OPPRURE DA QUESTO LINK

<http://people.na.infn.it/~spardi/PACS/SW/>

ALTRO SOFTWARE (SENZA FUNZIONE DI UPLOAD)

<https://www.radiantviewer.com/download/?src=ftst&f=setup>

Ginkgo CADx

Ginkgo CADx settings

Settings

- Ginkgo CADx
 - General
 - Workstation
 - Local database
 - Electronic health record
 - DICOM nodes**
 - Smart retrieve
 - Profiles
 - Modality settings
 - Hanging protocols
 - Locations

DICOM nodes settings

Local PACS

You must configure the local AET, which is used to communicate with the DICOM nodes. The specified port must be opened in the firewall, as it is essential for transfers.

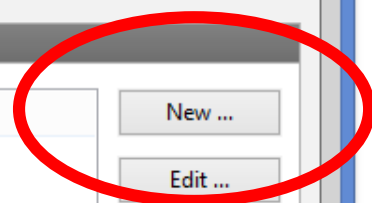
Local AET: ?

Port:

[Advanced settings...](#)

DICOM Nodes

Name	Use by def...	
01	Yes	<input type="checkbox"/> <input type="checkbox"/> <input type="checkbox"/> <input type="checkbox"/>



<http://ginkgo-cadx.com>

Remember that when you buy Ginkgo CADx Pro, you are contributing to development efforts

Powered by [MetaEmotion Healthcare](#)

Ginkgo CADx settings

Settings

DICOM Node

DICOM Node Worklist Advanced

Settings

Id: 01

AET: DCM4CHEE

Host: 80.158.3.99

Port: 11112

PDU (KB): 16384

Retrieve method: Move

WADO URL:

Retrieve mode: Series

Reuse connection:

Test connection Accept Cancel

...ed to communicate with the DICOM nodes. The ... as it is essential for transfers.

GINKGO_001

Advanced settings...

Use by def... Yes

New ... Edit ... Delete Set Default

Accept Cancel Apply

Image Import Wizard

Step 1 of 2: Overview data of DICOM files

Demographic data

Identifier* (ID or medical history number)
 Name Surname
 Birth date Sex

Study Details

Patient Weight Kg Height cm
Study Date Time
 Description

Series Date Time
 Description

252 GB free of 456 GB in dicomization dir.

<http://ginkgo-cadx.com>

Powered by [MetaEmotion Healthcare](#)

continuing to development errors